

Representing term variation in *lemon*

Elena Montiel-Ponsoda
Guadalupe Aguado-de-Cea
Ontology Engineering Group
Facultad de Informática
Universidad Politécnica de Madrid
{emontiel, lupe}@fi.upm.es

John McCrae
Semantic Computing Group
CITEC
Universität Bielefeld
jmccrae@cit-ec.uni-bielefeld.de

Abstract

In this contribution our objective is to define term variation, analyze the state of the art, and propose a new classification of term variants according to our representation purposes in *lemon*, a lexicon-ontology model to enrich ontologies with linguistic descriptions.

1 Introduction

A term variant has been defined as "an utterance which is semantically and conceptually related to an original term" (Daille et al., 1996). The same author expands this definition by explaining what is meant by *utterance*, *original term*, and *semantically and conceptually related terms* (Daille, 2005). An *utterance* is an attested form encountered in a text. It is considered to be a variant with respect to an *authorised term*, i.e., a term listed in an authoritative terminological resource and accepted by a certain community. And it can be related to the original term in three forms: 1) by a synonymy relation, 2) by reflecting a "semantic distance from the reference term", or 3) by a conceptual link.

According to Daille (2005), the adopted definition of term variation depends on the purpose of the final application. For instance, in information retrieval the term variants usually handled are morpho-syntactic variants (*histamine of the wine* vs. *wine histamine*¹) or variants related by a conceptual link (*printer* vs. *laser printer*).

In this contribution we concentrate on those variants that are considered synonyms and on those that reflect a "semantic distance" but that refer to the same concept. In doing so, we will not be dealing with those terminology variants related by means of a conceptual link. The reason for this is that we aim to analyze terminology variants with respect to an ontology or conceptual model, and we argue that conceptual relations will be already available in the knowledge model. However, we also foresee some mechanisms for the case that conceptually related variants are to be represented outside the ontology.

We understand **synonym related variants** as those term variants that are *semantically coincident but formally different*, as defined in Cabré (2008). With regard to **variants that reflect a semantic distance**, we include those variants that are *semantically and formally different* (Freixa, 2002; Cabré, 2008) but still refer to the same ontological concept.

In section 2 we propose a classification based on state of the art works and provide examples of each type of term variant. Then, in section 3 we describe how we aim at representing terminology variation in *lemon*, an ontology-lexicon model proposed in the framework of the Monnet project in order to linguistically enrich ontologies with lexical, terminological and syntactic information.

2 Typologies of variants revisited

Based on previous classifications of terminology variation (Freixa, 2002; Daille, 2005; Cabré, 2008) we identify two main groups of term variants: 1) term variants that are semantically coincident but formally different, and 2) term variants that are semantically and formally dif-

¹Some examples have been extracted from Daille (2005) and Cabré (2008)

ferent. This has representation consequences as will be shown in section 3.

Group 1) would include,

- ⤴ **graphical and orthographical variants** (*localization* vs. *localisation*);
- ⤴ **inflectional variants** (*cat* vs. *cats*);
- ⤴ **morpho-syntactic variants** (*nitrogen fixation* vs. *fixation of nitrogen*).

Regarding group 2), here we are dealing with terms that correspond to one and the same concept, but whose usage reflects a different aspect of the concept or a different intention on the side of the user, thus the semantic and formal distinction. This shows the pragmatic aspects necessary to be considered in scientific communication. It means that the use of one term or the other is conditioned by a certain cognitive intention and highlights certain dimensions or features of the concept that will make its use more appropriate in certain situations. This phenomenon has been termed *multidimensionality* (Broker, 1997; Rogers, 2004). As explained in Fernández-Silva et al., (2011), "multidimensionality occurs when a concept can be seen from more than one perspective and can therefore be classified and designated in more than one way based on the different characteristics that it possesses". In Cabré (2008) these term variants are also referred to as *partial synonyms*.

According to these definitions, we consider that the following term variants belong to this group:

- ⤴ **stylistic or connotative variants** (*man* vs. *bloke*)
- ⤴ **dialectal variants** (*gasoline* vs. *petrol*)
- ⤴ **pragmatic or register variants** (*headache* vs. *cephalalgia*)
- ⤴ **diachronic variants** (*tuberculosis* vs. *phthisis*)
- ⤴ **domain or concept dimension variants** (*swine flu* vs. *pig flu* vs. *H1N1* vs. *Mexic pandemic flu*; *MRSA* (as Methicilin-resistance *Staphylococcus aureus*) vs. *HA-MRSA* vs. *CA-MRSA*)
- ⤴ and what we dubb **explicative variants** (*immigration law* vs. *law for regulating and controlling immigration*).

It could also be argued that the term variants belonging to group 2) refer to different concepts, or, at least, to concepts belonging to different ontologies or to ontologies in the same domain created with different purposes. However, we

claim that since they are pointing to the same concept or object in the world, they can be represented as term variants for that concept. In the context of our research we are able to capture these terminological variants in a complex model of lexical descriptions that is to be published with domain ontologies, namely, the *lemon* model (McCrae, 2011).

In *lemon*, concepts are represented by the ontology, and terms are associated with concepts by means of a principled link represented by the class *LexicalSense*. It is this intermediate class that allows us to capture those semantic properties of term variants that make them *semantically and formally distinct*. In the next section, we aim at illustrating the representation of term variants in *lemon*.

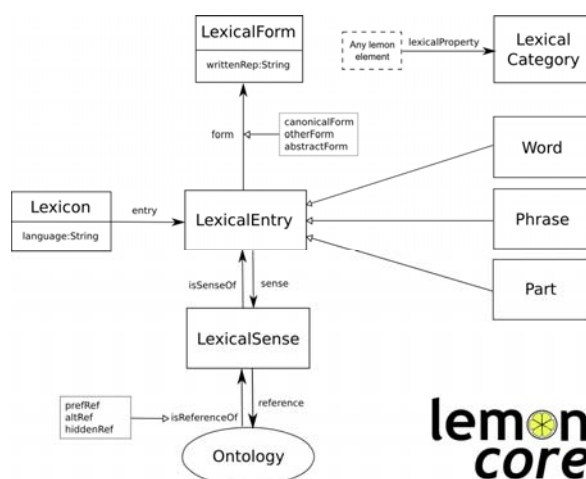


Figure 1. lemon core

1 Terminology variation in lemon

The core classes of the *lemon* model are the ones that make up the main path between the ontology and the lexical entry, its forms and written representations, as can be seen in Figure 1. Since concepts as defined in ontologies and lexical entries as defined in lexicons cannot be said to overlap, the *LexicalSense* class provides the adequate restrictions (usage, context, register, etc.) that make a certain lexical entry appropriate for naming a certain concept in the specific context of the ontology being lexicalized. This class will be key in making a distinction between those term variants included in group 1) and the ones included in group 2). Essentially, the main difference is that those terms variants considered *se-*

mentally coincident but formally different will be pointing to the same *LexicalSense*, whereas those considered *semantically and formally different* will be linked to different lexical senses, which in its turn are pointing to the same ontology element. Let us illustrate this with some examples.

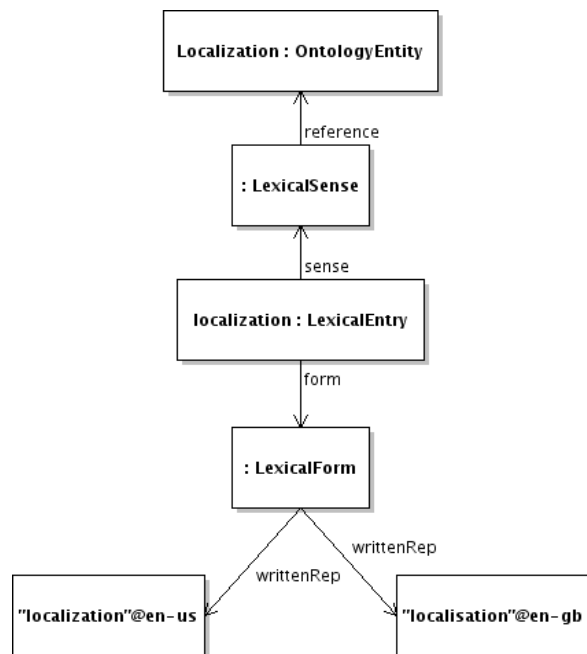


Figure 2. Example of orthographical variants

In Figure 2, we have included an example of the so-called graphical or orthographical variants. There we see that they are represented as two different written representations of the same *LexicalForm*, associated to the same *LexicalEntry* and pointing to the same *LexicalSense* and ontology concept. As these differences are only due to orthographical rules and not reflected in the spoken language, we consider them to be the same form of the entry.

In Figure 3 we represent two different lexical entries (*nitrogen fixation* and *fixation of nitrogen*) that are associated to the same *LexicalSense*, as their differences in format do not have any meaning or pragmatic consequences, but further represent the same meaning in the context of the ontology.



Figure 3. Example of morpho-syntactic variants

Finally, in Figure 4 we aim to illustrate one example of term variants which are semantically and formally different, in that they are used in different geographical settings. With the aim of capturing that restriction, we associate each *LexicalEntry* to a different *LexicalSense*, and account for that usage restriction.

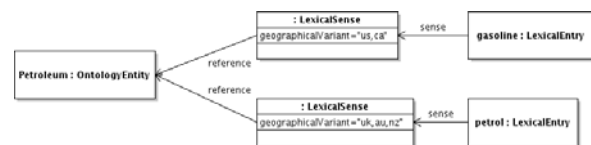


Figure 4. Example of dialectal variants

A similar approach would be valid for the rest of variants included in group 2).

Acknowledgments

This work is supported by the EU project Monnet (FP7-248458), the Spanish project BabelData (TIN2010-17550), and the CITEC excellence initiative funded by the EU and the Deutsche Forschungsgemeinschaft.

References

- Bowker, L. 1997. You say "flatbed colour scanner", I say "colour flatbed scanner": A descriptive study of the influence of multidimensionality on term formation and use with special reference to the subject field of optical scanning technology. *Terminology* 4(2):275-302.
- Cabré, M. T. 2008. El principio de poliedricidad: la articulación de lo discursivo, lo cognitivo y lo lingüístico en Terminología (I). *IBÉRICA* 16:9-36.
- Daille, B. 2005. Variations and application-oriented terminology engineering. *Terminology* 11(1):181-197.
- Daille, B. Habert, B. Jacquemin, C and Royauté, J. 1996. Empirical observation of term variations and principles for their description. *Terminology* 3(2):197-257.
- Fernández-Silva, S. Freixa, J. Cabré, M.T. 2001. A proposed method for analysing the dynamics of cognition through term variation. *Terminology* 17(1):49-73.
- Freixa, J. 2002. La variació terminològica: anàlisi de la variació denominativa en textos de diferent grau d'especialització de l'àrea de medi ambient. PhD Thesis. Universitat Pompeu Fabra, Barcelona.

McCrae, J. Spohr, D., Cimiano, P. 2011. Linking lexical resources and ontologies on the semantic web with lemon. *The Semantic Web: Research and Applications*, 245-259.

Rogers, M. 2004. Multidimensionality in concepts systems: A bilingual textual perspective. *Terminology* 10(2):215-240.